

Estate Farm

AUCTION

TIMED ONLINE

2581 34th Ave NE,
Harvey, ND 58341

OPENS: Tuesday, April 6

CLOSES: TUESDAY, APRIL 13 | 10AM 2021

PREVIEW: Tuesday, March 30 – Tuesday, April 13 | LOADOUT: Tuesday, April 13 – Tuesday, April 27

TRACK & 4WD TRACTORS

2015 John Deere 9570RT, premium cab, leather, powershift, 5 hyd., return flow, power beyond, large 1000 PTO, integrated auto steer, 10" armrest display, LED lights, hyd. swinging drawbar, (26) front suitcase weights, tow cable, 36" tracks, S/N1RW9570RLFP907098

2007 John Deere 9620, buddy seat, powershift, 4 or 5 hyd., return flow, integrated auto steer, front & rear hub weights, (20) rear suitcase weights, 520/85R46 triples, 4,295 hrs., S/NRW9620P051248

SKID STEER LOADER & ATTACHMENTS

2013 John Deere 329E track skid steer loader, aux. hyd., ISO/H controls, 7' bucket, hyd. pin locks, 17" tracks, 1,018 hrs., S/N1T0329EMEDE243087

Shyenne Black Max 700 snowblower, 7', hyd. drive, quick tach, hyd. spout, S/NSB002695

Haugen snow bucket, 102", quick tach, replaceable cutting edge, S/NM0012233

Skid steer loader grapple brush bucket, hyd., dual grapple, quick tach

John Deere Worksite Pro skid steer loader forks, 48", quick tach

Erskine hyd. brush mower, 7', dual blades, quick tach

Erskine hyd. sweeper attachment, 7' brush, quick tach, S/N1103830

COMBINES

2009 John Deere 9770, STS, Contour-Master, PRWD, DAS, AHC, buddy seat, integrated auto steer, Command Center armrest display, variable spd. feeder house, Y&M, hopper ext., high cap. ext. unloading auger, chopper, dual chaff spreaders, rear hitch, 520/85R42 front duals, 28L-26 rear tires, 2,494 sep. hrs., 3,772 engine hrs., S/NH097705732522

2008 John Deere 9770, STS, Contour-Master, PRWD, DAS, AHC, buddy seat, integrated auto steer, variable spd. feeder house, Y&M, hopper ext., high cap. ext. unloading auger, chopper, dual chaff spreaders, rear hitch, 520/85R42 front duals, 28L-26 rear tires, 2,787 sep. hrs., 4,376 engine hrs., S/NH097705726326

HEADS & SWATHER

2013 MacDon FD75 flex draper head, 40', dual sickle drive, hyd. fore/aft, Crary CWS wind bar, Headsight, finger reel, John Deere hookups, self-transport, S/N234774

2013 MacDon FD75 flex draper head, 40', dual sickle drive, hyd.

HEADS & SWATHER

fore/aft, Crary CWS wind bar, Headsight, finger reel, John Deere hookups, self-transport, S/N234748

2008 John Deere 612C non-chopping corn head, 12x30", RowSense, AHC, auto-tilt, Calmer knife rolls, hyd. deck plates, poly snouts, stubble lights, single pt. hookups, S/NH0612CX725381

John Deere 914 pickup head, 14', 7-belt, John Deere hookups, wind suppressor, S/NH00914B650981

John Deere 214 pickup head, 14', 7-belt, John Deere hookups, wind suppressor, S/NH542775

John Deere 212 pickup head, 12', 6-belt, wind suppressor, S/N440863

Case-IH 725 pull-type swather, 25', finger reel, 540 PTO, S/N1330124C004064

HEADER TRAILERS

2014 Horst 4-wheel header trailer, 45', 4-wheel steer, adj. mounts, brakes, lights, 235/85R16 tires on steel rims, S/N128054

2014 Horst 4-wheel header trailer, 45', 4-wheel steer, adj. mounts, brakes, lights, 235/85R16 tires on steel rims, S/N128056

Header trailer, 35', single pole

Single axle header trailer, 25', single post, 2" ball

TILLAGE EQUIPMENT

2019 John Deere 2680H vertical tillage, 45', 10" spacing, 5-section fold, 19-1/4" discs, HD rolling basket, rubber cushion, Goodyear 800/40R22.5 tires, recall updates completed, S/N1XF2680HKK0190266

2008 Bourgault 9200 chisel plow, 43', 12" spacing, 3-section fold, floating hitch, walking tandems, Summers harrow, S/N821080

Degelman 7651 land roller, 51', 3-section, 36" drum, S/N7651LRU1013

2009 John Deere 2210 field cultivator, 64-1/2', 6" spacing, 5-section fold, AccuDepth, floating hitch, walking tandems, knock-on sweeps, 3-bar harrow, S/NN02210X008401

FUEL TRUCK & PICKUP

1974 Ford 750 single axle cabover fuel truck, 5&2 spd., spring ride, (5) tanks, Neptune pump, twin hose reels, side storage compartments, shows 31,541 miles

2011 Chevrolet 2500HD, reg. cab, cloth, 6.0L gas, automatic, 4WD, long box, bed liner, power windows, brush grill, 245/75R17 tires, 209,235 miles

NH3 APPLICATORS & PARTS

2012 Bourgault 8825 NH3 applicator, 60', 15" spacing, 5-section fold, Raven Super Cooler, John Deere rate controller, section control, walking tandems, weight pkg., floating hitch, rear hitch, rear winch, S/N40610CU04

Nitro-Master 8500 NH3 applicator, 60', 15" spacing, 5-section fold, dual NH3 Super Coolers, John Deere GreenStar rate controller, walking tandems, rear hitch, rear winch

Raven NH3 Accu-Flow Super Cooler, w/section control

Misc. NH3 parts & knives

DITCHER & SCRAPER

2010 Dynamic Ditchers Wolverine rotary ditcher, 5', LH or RH discharge, poly-lined rotary paddles, large 1000 PTO, S/NTW302050029

Crown 600 pull-type scraper, 80" cut

OTHER EQUIPMENT

Summers 700 hyd. rockpicker, 3-bat reel, hyd. hitch, 16.5L-16.1SL tires, S/NM0114

Notch single axle portable hay feeder, 24'

Banman water pump, 16", 540 PTO, hyd. lift/drop, hose & fittings, low use

Misc. items to include: skid steer loader mower attachments, quick tach, receiver

GENERATORS & SHOP EQUIPMENT

Tahoe TPI 9000 LXU generator, gas, 420cc engine, 9,000 watt, 120/240v, 60Hz, electric start

Tahoe TPI 7000 LXH generator, diesel, 120/240v, 60Hz, electric start

John Deere AC2-CG405-30 air compressor, Subaru 14 hp. gas, w/(120) outlets

Bulk oil storage tank, electric pump, hose reel, Liquodynamics digital flow meter

Bulk oil storage, twin compartment, 120 gal., 90 gal. compartments, storage compartment, sight glass, drip pan

PARTS

(2) John Deere corn head snouts, off 30" head

(16) Yetter row cleaners

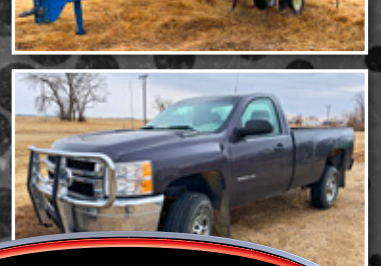
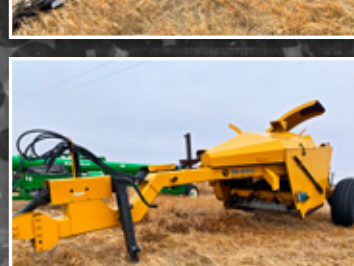
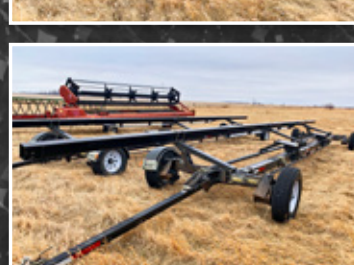
Combine parts for John Deere 9770

Asst. air seeder hosing

(3) Hyd. cylinders

(2) Sets small wire concaves for John Deere 9770

Misc. parts



SCOTT MUSCHA ESTATE

Heidi Muscha, PR; Kelly Muscha 701.399.9852

or Justin Ruth at Steffes Group, 701.237.9173 or 701.630.5583

701.237.9173 | SteffesGroup.com

Steffes Group, Inc., 2000 Main Avenue East, West Fargo, ND 58078



TERMS: All items sold as is where is. Payment of cash or check must be made sale day before removal of items. Statements made auction day take precedence over all advertising. \$35 documentation fee applies to all titled vehicles. Titles will be mailed. Canadian buyers need a bank letter of credit to facilitate border transfer. Scott Steffes ND81, Brad Olstad ND319, Max Steffes ND999, Justin Ruth ND2019

